



ONE STOP BEAUTY ACCESSORY SUPPLY

Super Adhesion

Lash Glue



Latex-free



Strong Hold
for 48 Hours



Tear-free Formula



Safe on Skin
Ophthalmologist tested



Formaldehyde Free



Quick Dry



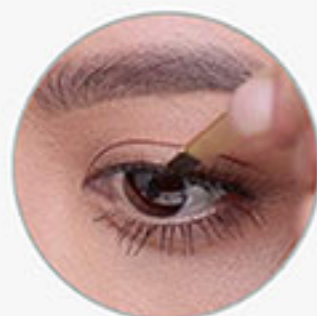
5g



1g



How To Use



STEP 1: Check Fit

Check fit of the lash band
against your natural lashes



STEP 2: Apply Adhesive

Brush on adhesive to lash band.
Wait 15-20 seconds until the
glue gets tacky

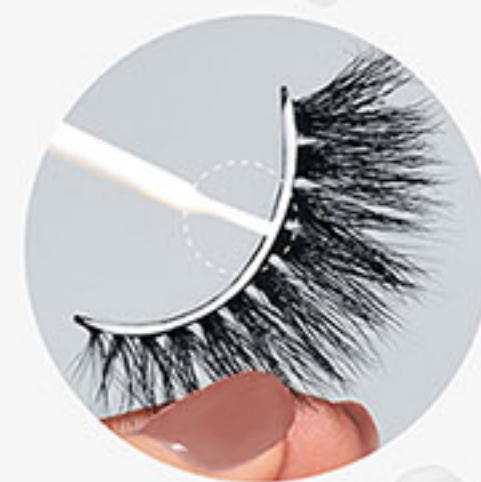


STEP 3: Apply Lashes

Apply the lashes over your natural
lash line and hold into place.

Precision Brush Tip

Easy Brush on Applicator,
Brush Applicator for a Thin, Precise Glue Line



Our easy glide brush on
applicator makes applying
glue to your falsies easier
than ever



Strong Hold

Quick dry &
Long-wearing

Packaging Recommendation



(5g)



(5g)



(5g)



(1g)

