

1

Bond and Seal Lash Glue

Heavy
metal TestMicrobiological
Test

ONE STOP BEAUTY ACCESSORY SUPPLY

 Lashes into place for
around 1 week

Faster drying time



The 'bond':

Applied to the base of your natural lashes

The 'seal':

Locks your lashes in place once
Individual clusters are applied.

EASY 3 STEPS APPLICATION

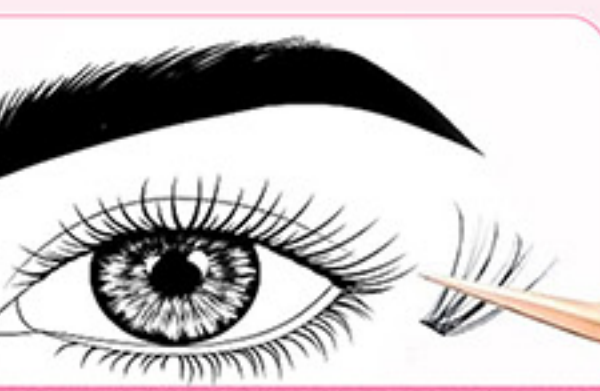
1



BOND:

Brush a thin layer of bond
under the natural lashes

2



APPLY:

Place cluster lashes under
the natural lashes

3

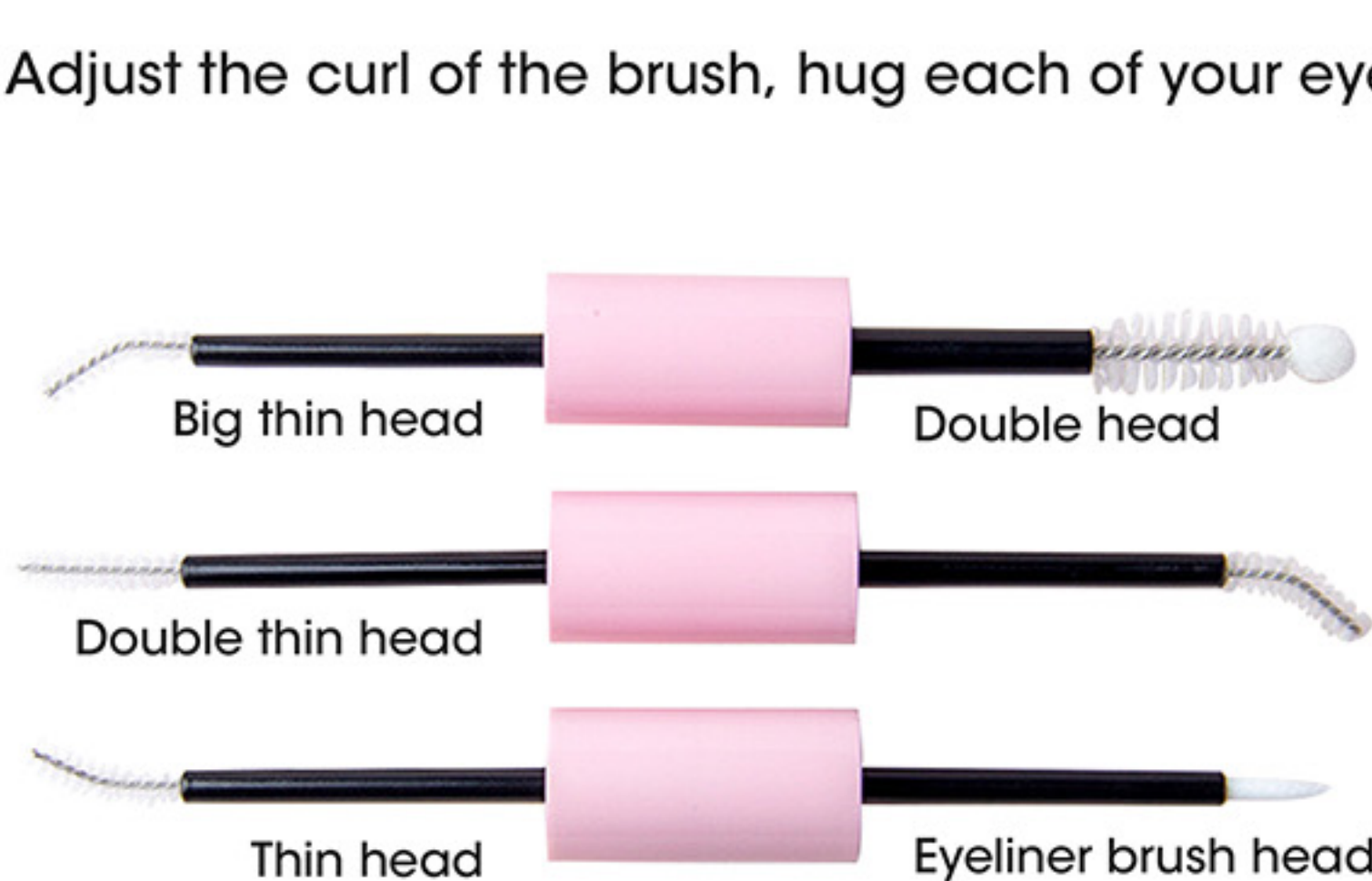


SEAL:

After applying the full set, dab a light coat
of seal at the base to lock them in place

MORE OPTION:

Adjust the curl of the brush, hug each of your eyelashes

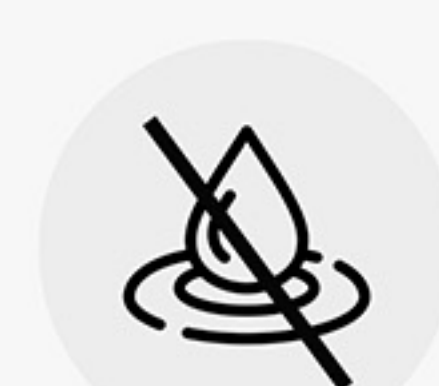
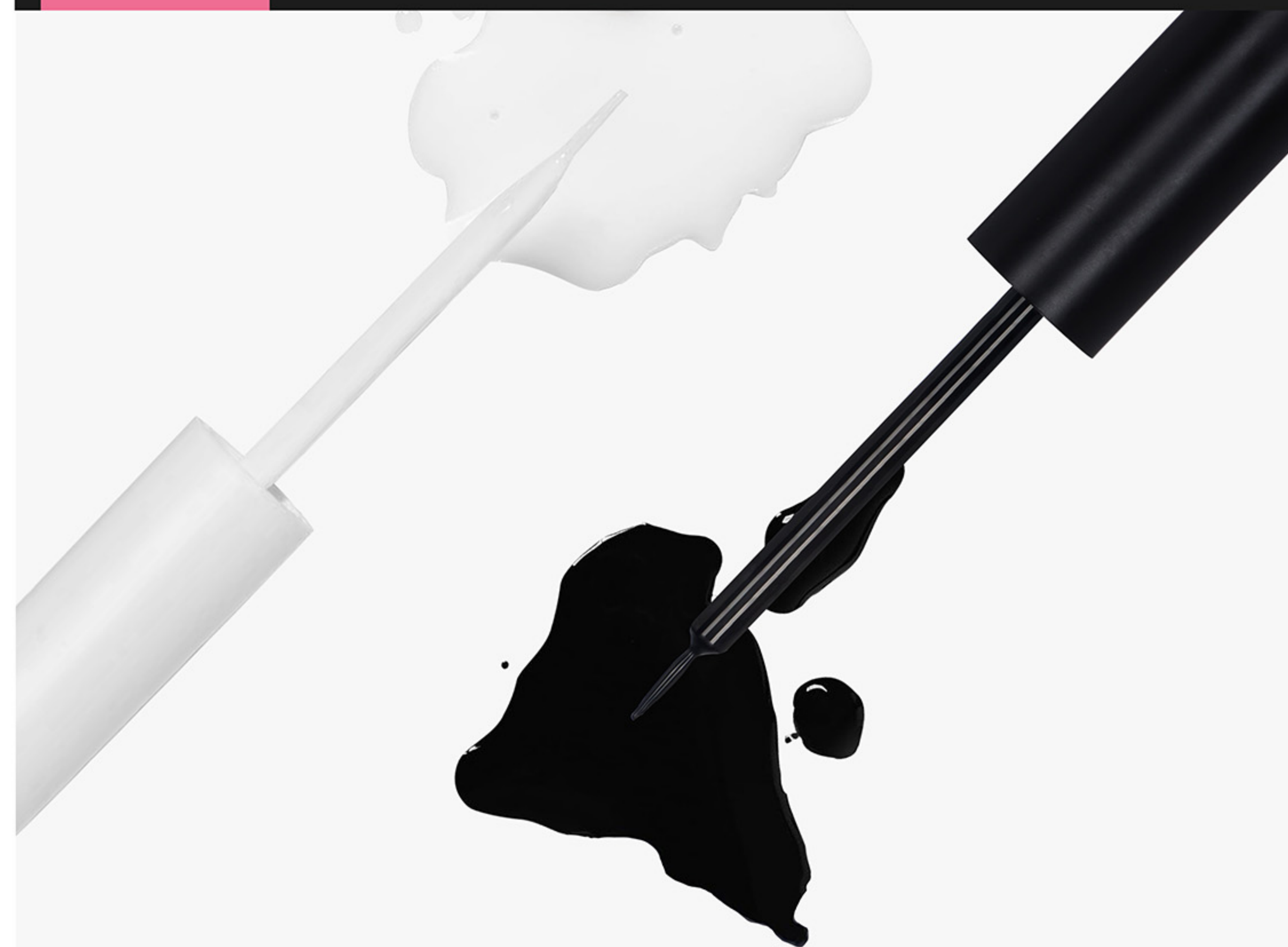


OR

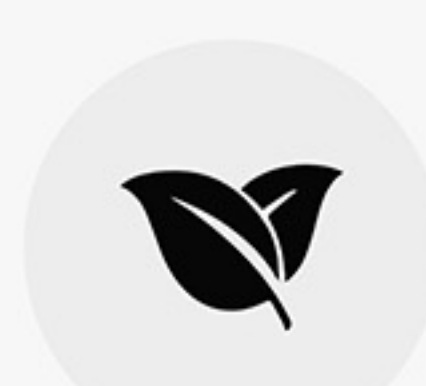


2

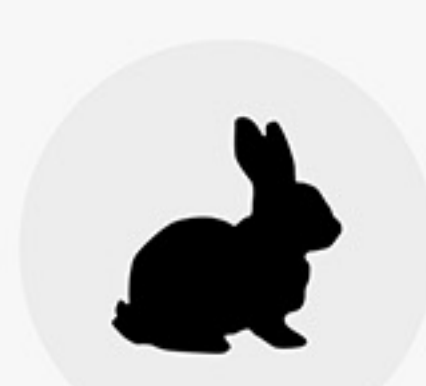
Lash Glue (White / Black)



Latex-free



Sulfate-free



Cruelty-free



Paraben-free



Vegan

PRECISION BRUSH TIP

Easy brush on applicator

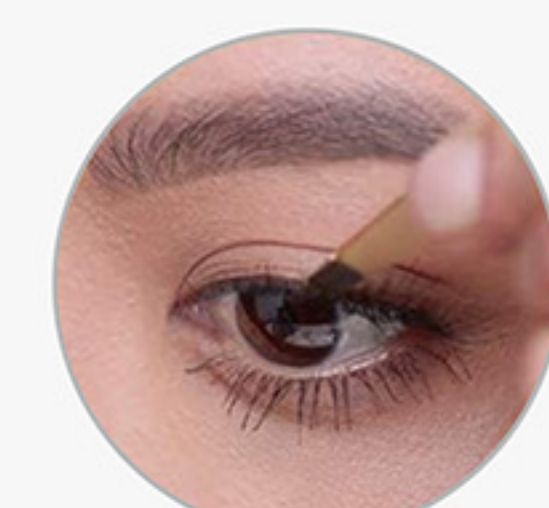


STRONG HOLD

Quick dry & Long-wearing

Our easy glide brush on
applicator makes applying glue
to your falsies easier than ever

HOW TO USE



STEP 1: CHECK FIT

Check fit of the lash band
against your natural lashes

STEP 2: APPLY ADHESIVE

Apply a thin line along base of
false lash (never apply directly
to your eyelids).

STEP 3: APPLY LASHES

Once tacky to the touch, apply
the lashes over your natural
lash line and hold into place.

3

Lash Remover & Cleaning



Oily texture



Transparent



Quick removal



No residue



Non-irritating



Cruelty-free

UPGRADED SPIRAL BRUSH HEAD

Easy To Apply Just Like Mascara



360°

Spiral brush head easily
penetrates deep into the lashes

LASH REMOVER

For Cluster & Individual & Strip Lashes
1.17FL.OZ.

HOW TO USE

STEP 1

Apply lash remover to the root of
the cluster lashes and wait
30-60 seconds for the lash glue
to dissolve.

STEP 2

Brush lashes with the remover
several times from top to bottom
until the clusters come off.

STEP 3

Remove the eyelash clusters
or cosmetic
residue with a cotton pad.

4

Lash Remover & Shampoo

SALON USE
PRE-TREATMENT CLEANSINGHOME USE
MAKEUP REMOVAL & EXTENSIONS AFTERCARE

Mild formula



Oil free



No burning

Safe for eyelash
extensionsThick foam
formula

HOW TO USE



STEP 1

Pump the foaming cleanser on the
brush or hand

STEP 2

Dab the brush in foam



STEP 3

With closed eyes, gently work the
brush up and down along the lashes.

STEP 4

Rinse with water & pat dry