

DOUBLE ENDED EYEBROW & EYELASH BRUSH

SKU.NO.: 0202231139

FEATURES

2 IN 1 DOUBLE ENDED BRUSH FOR EYELASH AND EYEBROW



Specially designed eyebrow brush (tilted back) for easy use and grasp.



PRODUCT INFORMATION

Material: ABS handle + synthetic bristles

Size: 160mm



GIFT SET

COMFORTABLE SPA FOR YOUR EYELASHES



Grease Residue



Cosmetics Residue



Eye Discharge



HOW TO USE



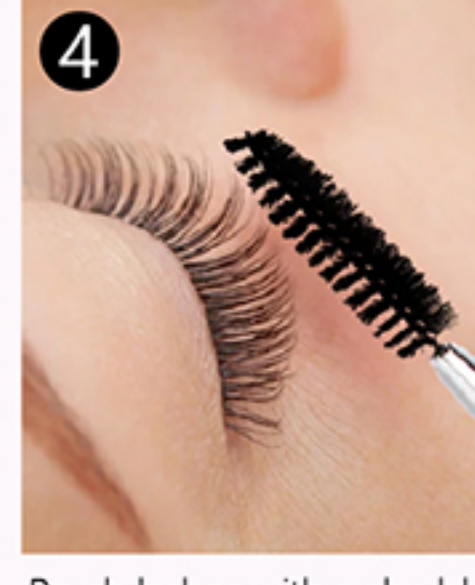
1 Press the lash shampoo onto the lash cleaning brush



2 Close your eyes and use the eyelash cleaning brush to rub at the root of the eyelashes



3 Wipe clean with cotton pad



4 Brush lashes with a double-ended brow and lash brush