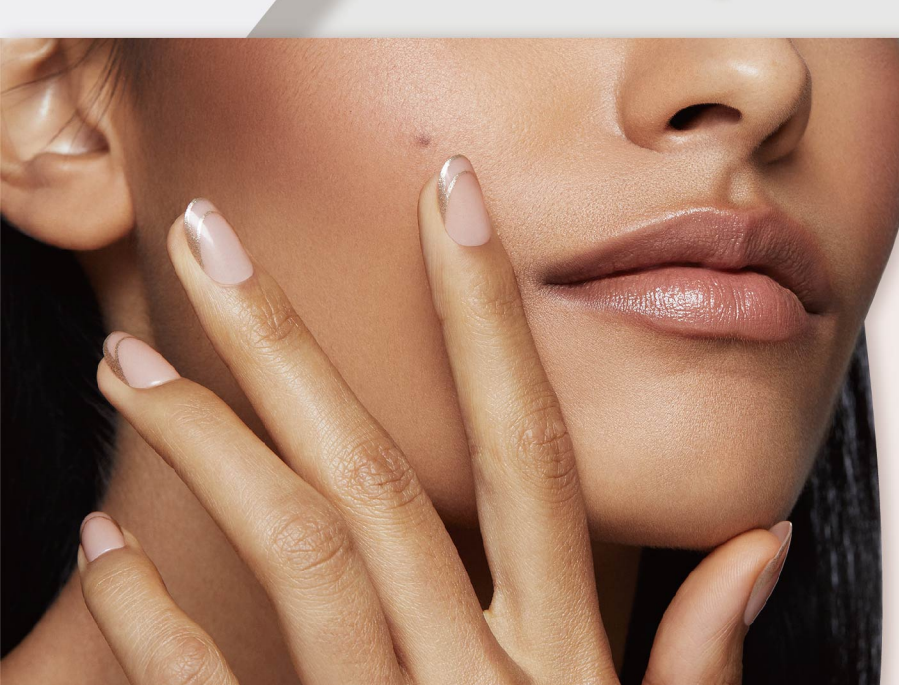
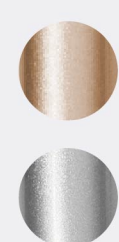


# 9 IN 1 NAIL ART REPLACEABLE BRUSH SET

SKU.NO.: 0101270139

MATERIAL:

Aluminum & Nylon Hair



## REPLACEABLE



## FUNCTION INTRODUCTION

Each pen/brush has its own unique function to design nail art for you.



#1 Liner Brush



#2 Drawing Brush



#3 Carving Brush With S



#4 Carving Brush With L



#5 Mini-Flat Brush



#6 Flat Brush



#7 Fan-Shaped Brush



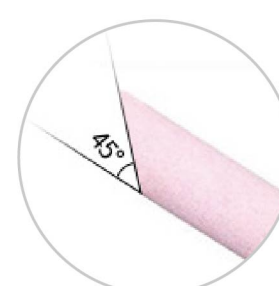
#8 Oblique Brush



#9 Quartz Polishing Pen



The tip of the pen has a 45° bevel, which blends and fits the edge of the nail, and easily removes the cutin on the nail seam.



- TIPS: Can be used on natural/false/acrylic/gel nails.

## HOW TO START A NEW PEN

1



Pour the water into the cup

2



Soak the manicure pen in the cup and wash it

3



Irreversible direction and do not vigorously rub back and forth.

4



Wipe off excess wash water