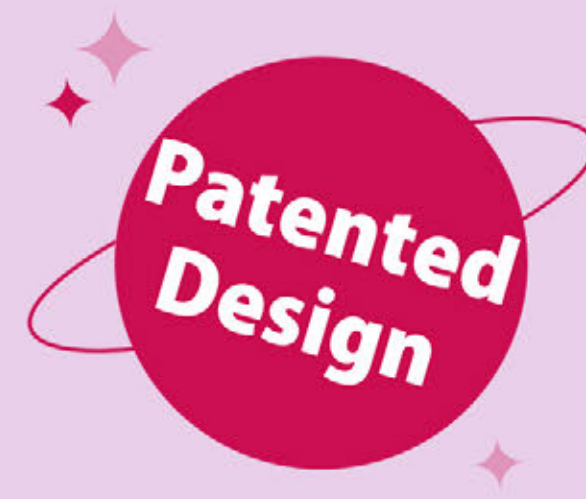


# INNOVATIVE DESIGN SPONGE

One Stop Beauty Accessory Supply



Innovative Design



Patented Technology



Gentle on Skin



Versatile Use



Wet & Dry Dual Use



# # Sleek Press Beauty Puff

Sku.No: 202210641

Size: 40\*54\*58mm

Material: PU

01

## Pointed Tip

Precise application in hard-to-reach areas for flawless coverage

01

02

02

## Flat Edge

Effortlessly blends foundation over large areas for a smooth finish

03

## Top Edge

Perfect for highlighting and accentuating features with ease

04

## Ergonomic Sides

Comfortable grip for contouring and blending with superior control





# # Applicators

## Freckles Look <sup>patented</sup>

### Cosmetic Applicator

Create a freckles look in 2 steps

01

## Freckles Dotting

The innovative silicone felt tip allows you to create freckles easily and with irregular shapes to make them look hyper-realistic.

02

## Blending Sponge

A flawless blended makeup look with no streaks, radiating a natural glow.



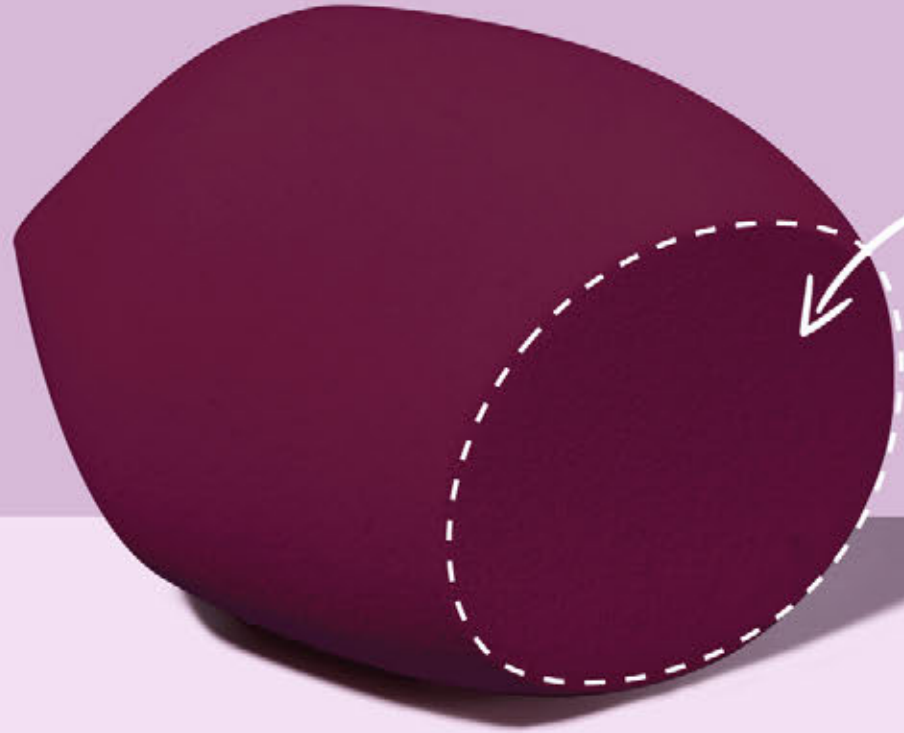


# # Helix Edge Makeup Sponge

Sku.No: 202210622

Size: 40\*60mm

Material: PU



01

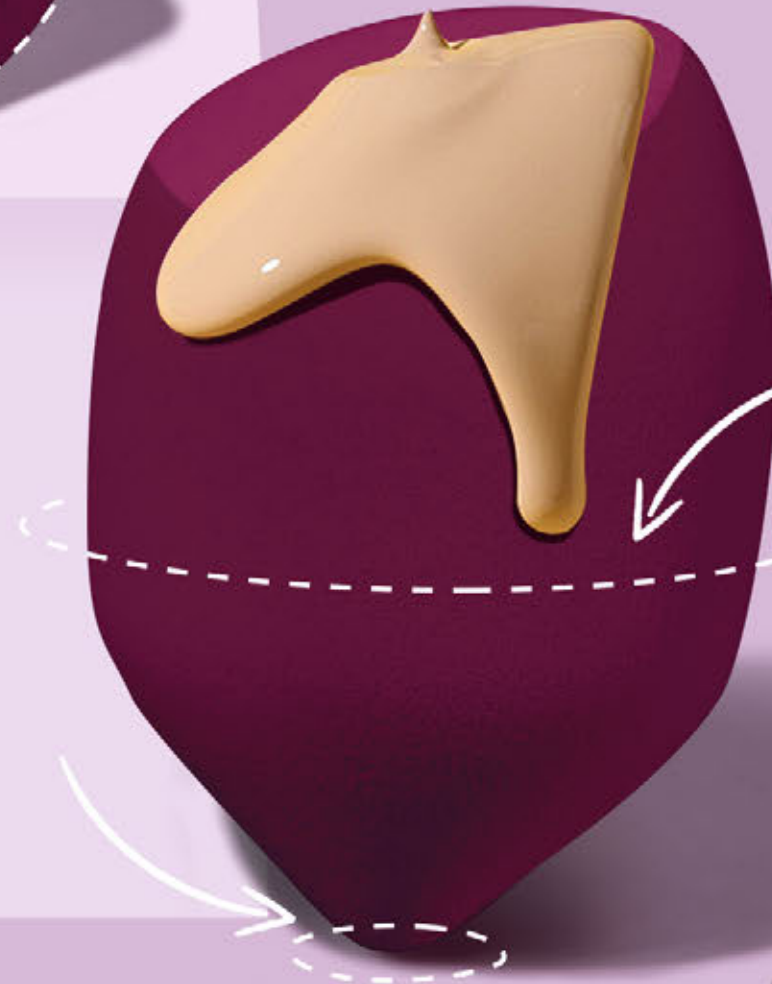
## Flat Edge

Perfect for larger areas of the face such as forehead or cheeks.

02

## Pointed tip

Perfect for smaller areas such as under the eyes, around the nose and lips.



03

## Round Side

Use to apply makeup on face and neck.





# # Olive Cut Beauty Sponge

Sku.No: 202210624  
Size: 40\*60mm  
Material: PU



01

## Pointed tip -1

Perfect for smaller areas such as under the eyes, around the nose and lips.

02

## Flat Edge

Perfect for larger areas of the face such as forehead or cheeks.

03

## Round Side

Bounce and blend for seamless, all-over coverage.

04

## Pointed tip-2

Spot-conceal blemishes for precise coverage





# # Tri Edge Beauty Sponge

Sku.No: 202210619

Size: 50\*50\*20mm

Material: PU

## 01

### Flat Edge

Ideal for blurring and softening the lower lash line and brow bone for a seamless finish.

01



02



03



04



## 02

### Small Edge

Perfect for precise contouring around the eyes, nose, and cheekbones, enhancing and defining facial features with ease.

## 03

### Arc surface

Blend makeup for a finished look

## 04

### Large Edge

Apply foundation to the face with abouncing motion





# # Revolve Makeup Sponge

Sku.No: 202210623

Size: 40\*60mm

Material: PU



01

## Pointed Tip

Conceal + perfect hard-to-reach areas or blemishes

02

## Arc Surface

Blend makeup for a finished look

03

## Flat Edge

Perfect for larger areas of the face such as forehead or cheeks.

04

## Unique Shape

Multi-purpose foam works with all liquids, creams + powders



# # Tri Sculpt Irregular Sponge

Sku.No: 202210620  
Size: 62\*45\*30mm  
Material: PU



01

## Pointed Tip

Perfect for smaller areas such as under the eyes, around the nose and lips.

03

## Small Edge

Perfect for precise contouring around the eyes, nose, and cheekbones, enhancing and defining facial features with ease.

02

## Flat Edge

Perfect for larger areas of the face such as forehead or cheeks.

04

## Arc Surface

Blend makeup for a finished look



# # Gyro Shape Beauty Sponge

01

## All-in-One Versatility

Ideal for blending foundations, creams, and liquids with professional-level precision.

02

## Fast & Flawless

Effortlessly achieve a smooth, streak-free finish in seconds.

03

## Wet or Dry Perfection

Designed for dual functionality, delivering consistent results in both wet and dry applications.

Sku.No: 202210624

Size: 40\*60mm

Material: PU





# # Sharp Edge Beauty Sponge

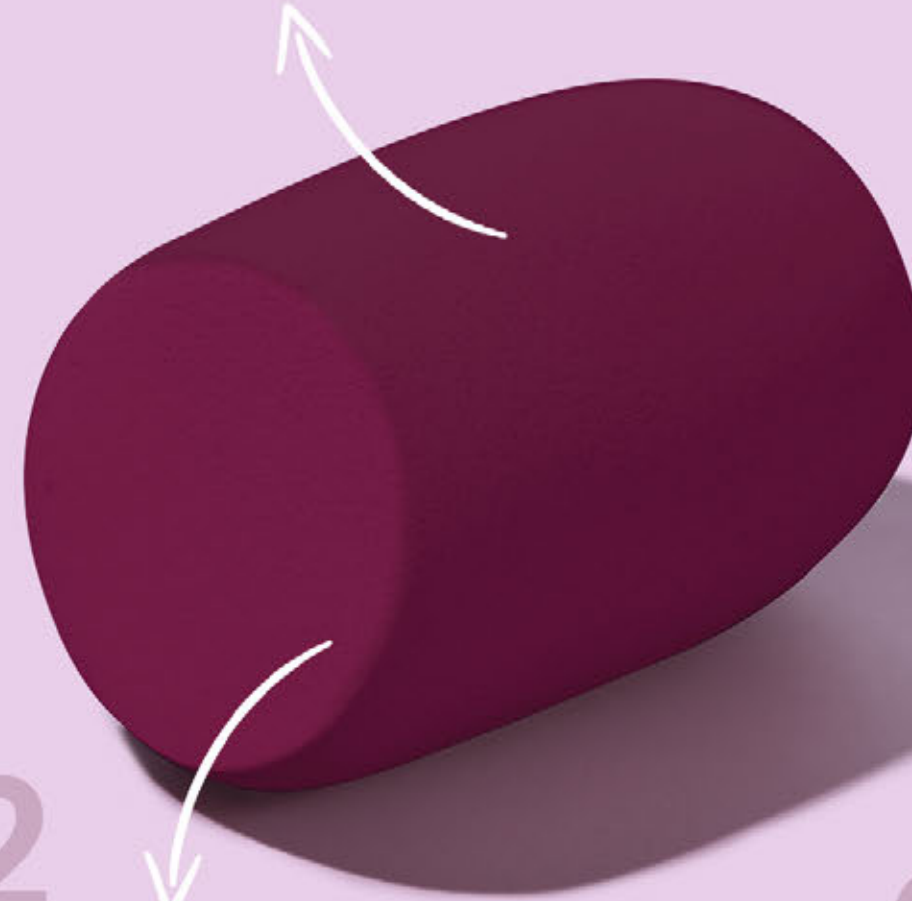
Sku.No: 202210621  
Size: 40\*60mm  
Material: PU



01

## Round Side

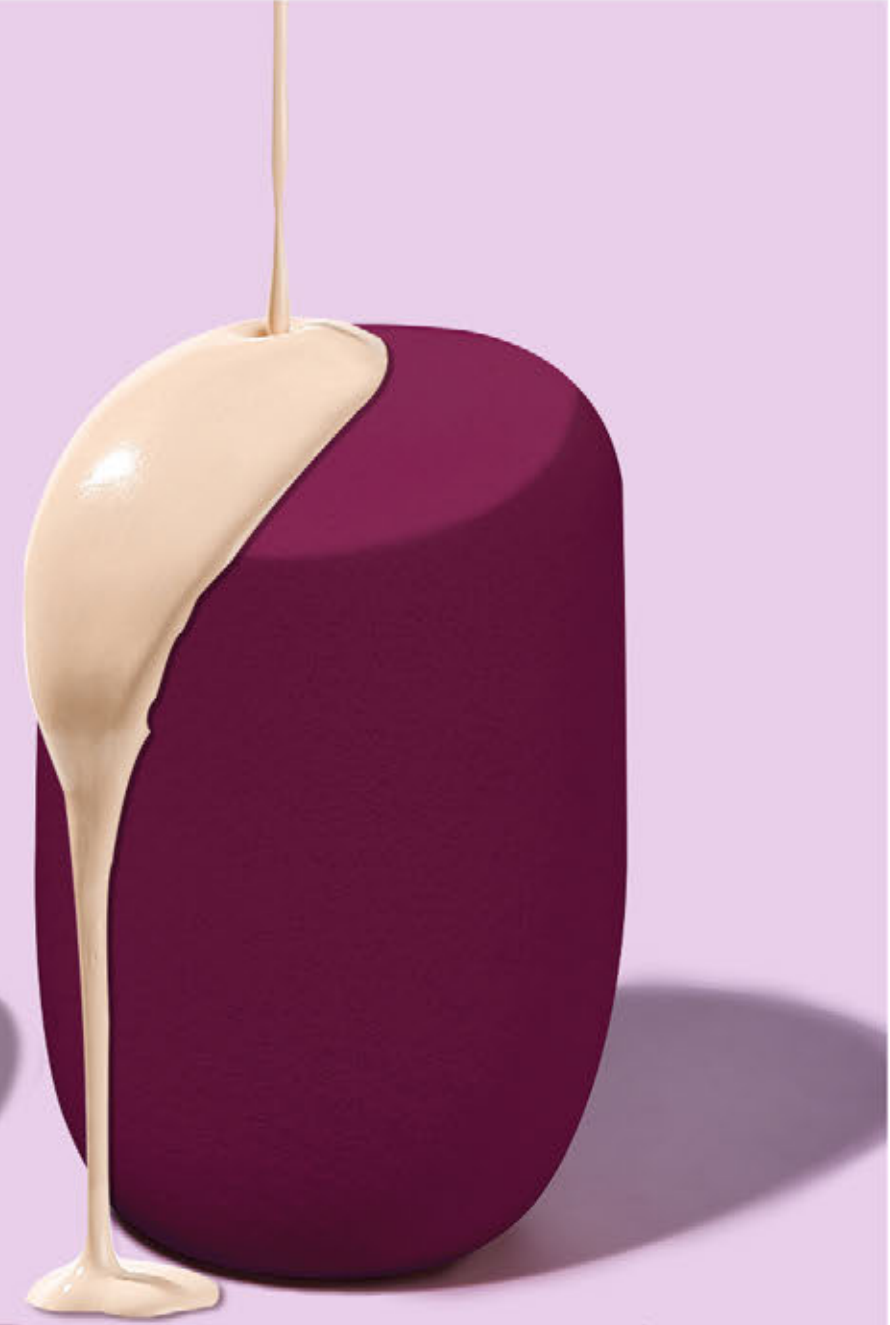
Bounce and blend for seamless, all-over coverage.



02

## Flat Edge

Perfect for larger areas of the face such as forehead or cheeks.



03

## Easy Application

works with all liquid, cream,  
+ powder formulations



# # Iron Sculpt Sponge

Sku.No: 202210618  
Size: 45\*40\*18mm  
Material: PU



## 01

### Base

Blend liquid +  
cream makeup



## 02

### Define

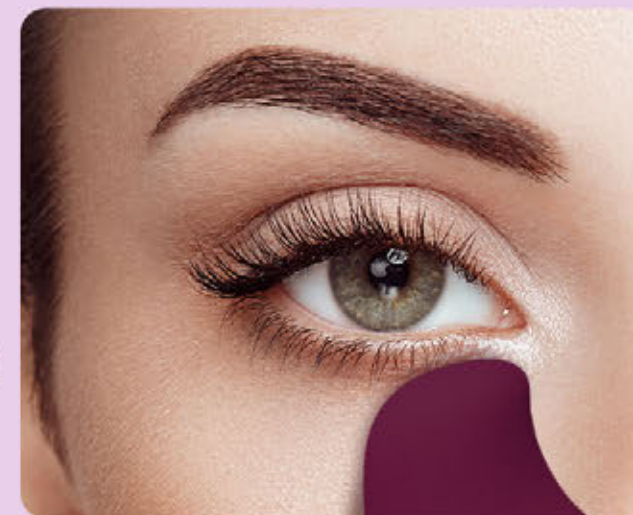
Contour +  
blend out blush



## 03

### Under Eyes

Set makeup





# # Creative Curve Sponge

Sku.No: 202210640  
Size: 40\*60mm  
Material: PU



01

## Pointed Tip

Perfect for smaller areas  
such as under the eyes,  
around the nose and lips.

02

## Arc Surface

Blend makeup for a finished look

03

## Flat Edge

Perfect for larger areas  
of the facesuch as  
forehead or cheeks.



# # Applicators

## I'm Not Lipstick

Cosmetic Applicator

Perfect for on-the-go touch-ups



patented



### 01 Sponge Applicator

Tip pointed precision  
blending on

### 02 Compact Mirror

Touch up your look



# # Creative Curve Sponge



**more options**



## 01 Precision Tip

Ideal for concealing and detailing around the eyes and nose.

## 03 Curved Edge

For detailing around the eyes, nose, and T-zone.

## 02 Flat Base

Used for tapping foundation on larger areas of the face.