

A woman with long, straight blonde hair is shown from the waist up, wearing a light grey crop top and matching pants. She is holding a large, pink, oval-shaped detangling brush with a long handle. The brush has a grid of wooden teeth with small, rounded tips. The background is a plain, light grey color.

ST  
ST FUTURE

# Silk Flow Detangling Brush

Detangle • Massage • Shine.

**26+** YEARS

One Stop Beauty Accessory Supply

BEAUTY MEETS INNOVATION

# Detangle & Smooth in One Go



Reduces Breakage



SMOOTHER,  
SHINIER HAIR



LESS FRIZZ.  
MORE FLOW



FASTER DRYING,  
SAVE TIME

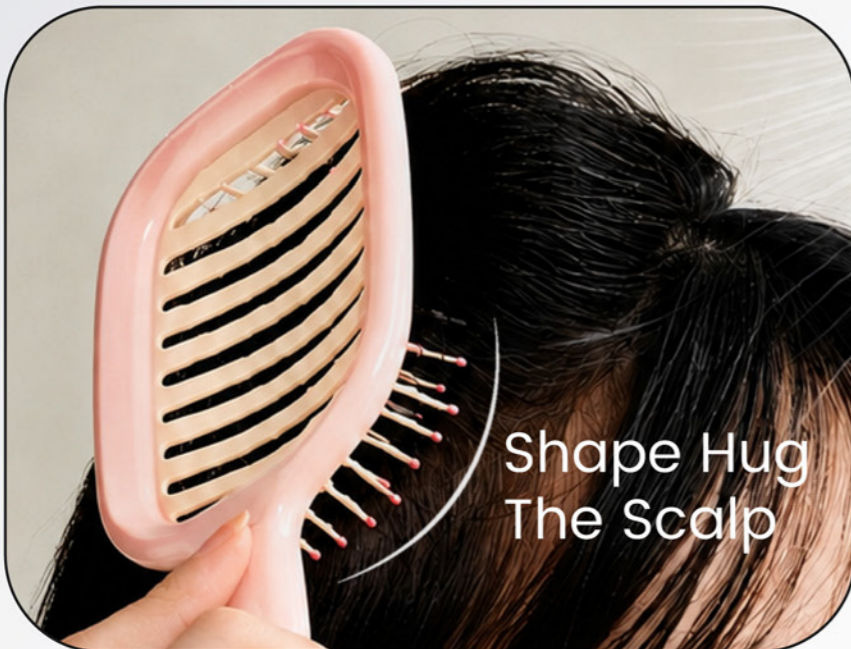


# Silk Flow Detangling Brush

Detangle.Smooth.Dry Faster.

## Curved Shape Hug The Scalp

Quickly finds the scalp position



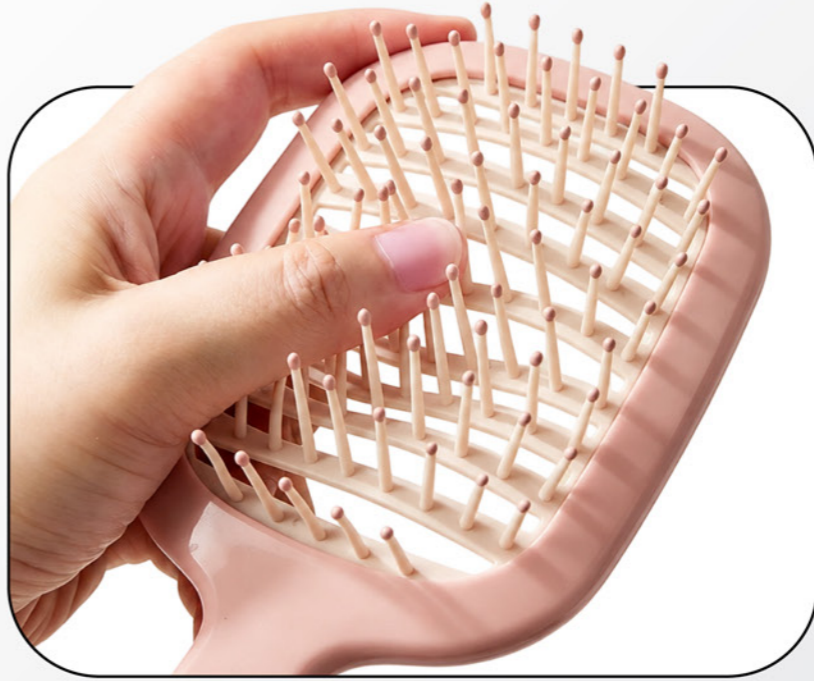
## Rounded Ball-Tip Bristles

Deep reach without scratching, for a relaxing massage.



## High-Elasticity Frame

Made with TPEE material, soft and highly elastic.



SKU.NO: 0202220197  
Material: ABS+TPEE  
Size: 21.6\*8.4cm

# Wet & Dry Use

Works on wet or dry hair to detangle and smooth in one go, reducing pulling and breakage.



## High-Elastic Bristles & Hollow Spiral Design

Glide root to tip for glossy, tangle-free hair and faster airflow drying.

# More Option



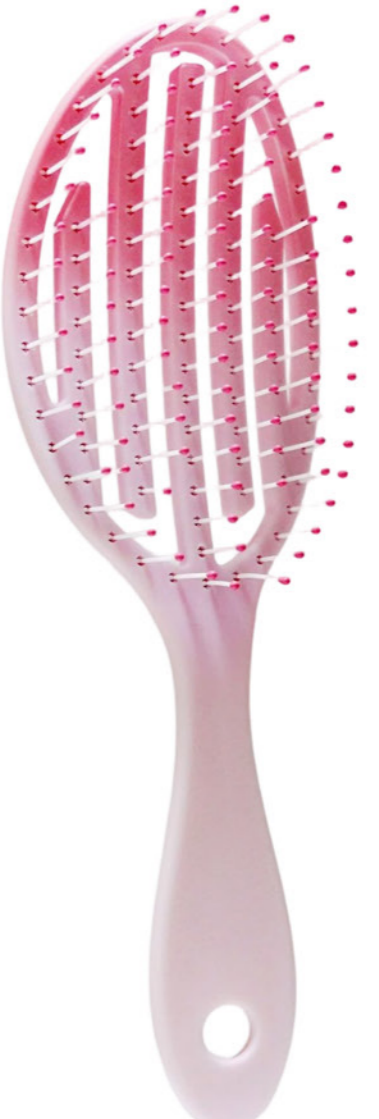
SKU.NO: 0202220196  
Material: ABS+TPEE  
Size: 22\*8cm



SKU.NO: 202220198  
Material: CPU  
Size: 23.2\*8.3cm



SKU.NO: 0202220199  
Material: ABS+CPU  
Size: 24.7\*8.5cm



SKU.NO: 0202220200  
Material: ABS + Nylon  
Size: 21.5\*7cm

# More Option



SKU.NO: 0202220202  
Material: ABS + Nylon  
Size: 24\*8cm



SKU.NO: 0202220203  
Material: PP  
Size: 24\*7.5cm



SKU.NO: 0202220204  
Material: ABS + Nylon  
Size: 23\*7.3cm

# More Option



SKU.NO: 0202220205  
Material: ABS + Nylon  
Size: 23\*7cm



SKU.NO: 0202220206  
Material: ABS + Nylon Needle  
Size: 24\*7cm



SKU.NO: 0202220207  
Material: ABS + Nylon Needle  
Size: 24.5\*7cm